



The product images are for illustration purposes only. Actual product appearance, ports, keyboard layout, and accessories may vary by model.

- 27" FHD (1920x1080) IPS display, Anti-glare 16:9
- Extreme mode 4 ms response time
- 100Hz refresh rate
- 1300:1, 99% sRGB, 8-bit
- Eyesafe® Certified 2.0, TÜV Rheinland® Eye Comfort Certification, TÜV Rheinland® Low Blue Light (Hardware Solution)
- Case color - Raven Black / Storm Grey
- 3-year limited warranty

**Premium Care - Advanced Support from Real People. Real Fast.**



**REAL PERSON**

Choose how you want to reach us - through the phone, chat or email - our expert technicians will take care of you.



**REAL FAST**

Highly trained technicians will provide you real-time solutions, whatever the issue, on your first contact. If needed, our team will schedule an onsite visit for the next business day.



**HASSLE FREE**

'Getting started' and 'how-to' assistance for hardware and software. Easy solutions that are simple to reach - that's how Premium Care delivers you the ideal support experience.



**PC HEALTH CHECK**

Free annual PC Health Check that allows our experts to spot issues before you do so they can resolve them quickly and help you avoid PC problems.

**Accidental Damage Protection - Protection of your PC from the unexpected.**

Experience shows that a significant portion of devices may be damaged (and not covered under warranty) in the first three years. Lenovo's Accidental Damage Protection service covers accidents beyond the system warranty such as drops, spills, bumps and even electrical surges. Make sure your new device has maximum protection, avoid unplanned costs and get peace of mind.

**Base Warranty** - Included with the systems you purchase, default 1- or 3-year coverage window.

**Warranty Extensions & Upgrades** - Service and protection that's right for your circumstances.

- Pick Up & Return Courier
- Onsite Support
- Technician Installed Customer
- Replaceable Unit Service
- International Warranty Upgrade

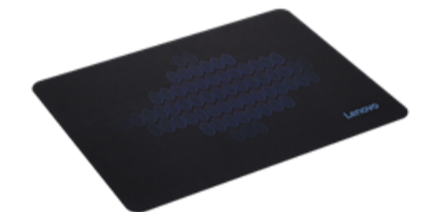
**Recommended Accessories** Mexico



**Humanscale Arm for dual monitor configuration, polished aluminum with whit...**  
4ZE1U10767



**NanoSaver Cable Lock from Lenovo**  
4XE1L51710



**Lenovo Cloth Gaming Mouse Pad M**  
GXH1C97873

>> [View More Accessories](#)

**Recommended Services**

**Best**

4Y Premier Support upgrade from 3Y Courier/CCI Product Exchange ThinkVision (5WS1N78821)

**Better**

3Y Premier Support upgrade from 3Y Courier/CCI Product Exchange ThinkVision (5WS1N78820)

**PERFORMANCE****Display Size**

27"

**View Area**

597.9x336.3 mm

**Panel**

In-Plane Switching

**Backlight**

WLED

**Aspect Ratio**

16:9

**Resolution**

1920x1080

**Pixel Pitch**

0.311 x 0.311 mm

**Dot / Pixel Per Inch**

82 dpi

**View Angle (H / V)**

178° / 178°

**Response Time**

4ms (Extreme mode) / 6ms (Typical mode)

**Color Support**

16.7 Million

**Refresh Rate**

100Hz

**Brightness**300 cd/m<sup>2</sup>**Contrast Ratio**

1300:1

**Color Gamut**

99% sRGB

**Screen Surface Treatment**

Anti-glare

**Curvature**

None

**Camera**

None

**Microphone**

None

**Speakers**

None

**Power Consumption (Typical / Maximum)**

19.5W / 36W

**Power Adapter**

Integrated

**DESIGN****Stand**

Tilt Stand

**Case Color**

Raven Black / Storm Grey

**Side Bezel Width**

2.3 mm

**Mounting**

Supports VESA mount 100 x 100 mm

**ThinkCentre M Series Support**

Tiny, Nano Support

**Dimensions (WxDxH)<sup>[1]</sup>**

- Width of Head (Slimmest Part) | 6.9 mm (0.27 inches)
- Highest Position | 612.3 x 184.9 x 475.0 mm (24.11 x 7.28 x 18.70 inches)
- Lowest Position | 612.3 x 184.9 x 475.0 mm (24.11 x 7.28 x 18.70 inches)
- Head Only | 612.3 x 43.5 x 368.0 mm (24.11 x 1.71 x 14.49 inches)

**Packaging Dimensions (WxDxH)**

720 x 125 x 452 mm (28.35 x 4.92 x 17.8 inches)

**Weight<sup>[2]</sup>**

- Monitor With Stand | 4.5 kg (9.9 lbs)
- Monitor Head Only | 3.6 kg (7.9 lbs)

**Packaging Weight**

6.9 kg (15.2 lbs)

**CONNECTIVITY****USB Port**

None

**Video Connector**

2x HDMI® 1.4, 1x VGA

**Network Connectivity**

None

**SERVICE****Base Warranty**

3-year limited warranty

**CERTIFICATIONS****Environmental Certification**

ENERGY STAR® Certified, TCO 9.0, TCO Edge 2.0, EPEAT™ Gold, RoHS, EU Energy Efficiency Level (Level-E)

**Ergonomic Certification**

Eyesafe® Display 2.0, TÜV Low Blue Light (Hardware solution), TÜV Rheinland® Eye Comfort

**Sync Technology**

None

**Special Features**

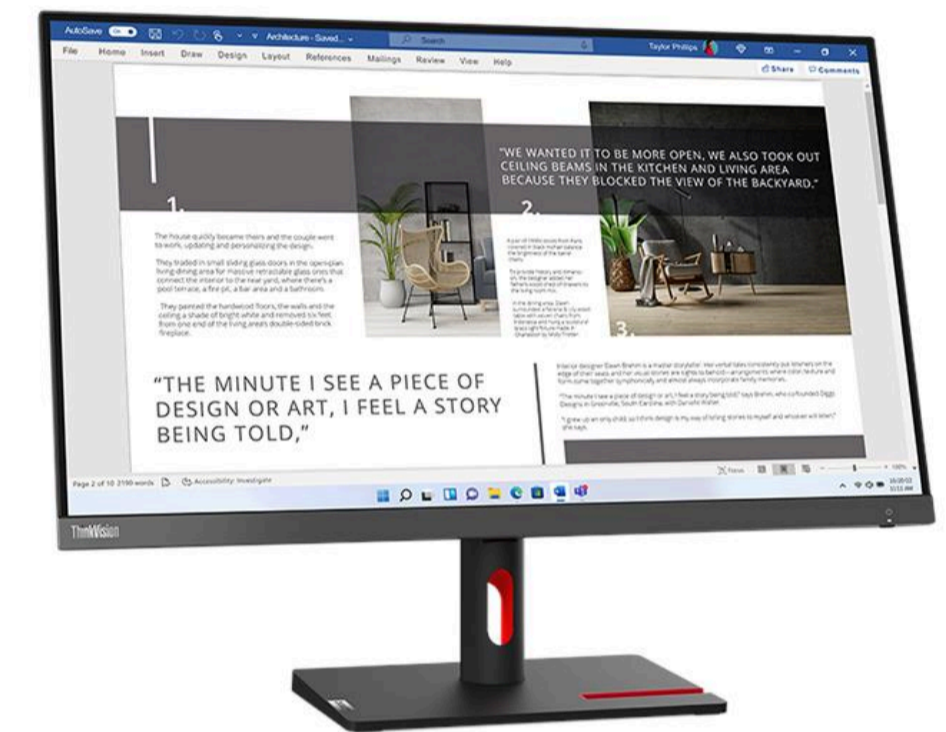
- Microsoft® Teams Certified
- Natural Low Blue Light

**SOFTWARE****Operating System**

Support Windows® 10, Windows® 11

**ACCESSORIES****In the Box**

- Monitor with stand
- 1x HDMI® cable (1.8m)
- 1x Power cable (1.8m)
- Quick setup guide

**MODEL****Region** : LA**EAN / UPC / JAN**: 0196803503265 / 196803503265 / None**Announce Date** : 2023-05-31

Product image is a sample, it may not match the real color of this model

Note:

[1] The system dimensions may vary depending on configurations.

[2] The system weight is approximate and based on results in Lenovo lab, which varies depending on the source of component, variance of the distribution of each component, and manufacturing process. It may not be the exact weight for each specific model.

- Please refer to the official [Lenovo store website](#) or contact a local Lenovo sales representative or authorized business partner for current inventory and purchase options.
- Lenovo reserves the right to change specifications without notice.