



The product images are for illustration purposes only. Actual product appearance, ports, keyboard layout, and accessories may vary by model.

- 27" FHD (1920x1080) VA display, Anti-glare 16:9, 1500R Curvature
- Up to 0.5 ms response time (MPRT)
- Up to 280Hz refresh rate
- 3000:1, 99% sRGB, 90% DCI-P3, 8-bit
- -5° to +22° tilt, left & right 30 swivel, -90° to +90° pivot, up to 135mm lift stand
- Eyesafe® 2.0, TÜV Low Blue Light (Hardware solution), TÜV Rheinland® Eye Comfort
- Case color - Raven Black
- 3-year limited warranty

Premium Care - Advanced Support from Real People. Real Fast.



REAL PERSON

Choose how you want to reach us - through the phone, chat or email - our expert technicians will take care of you.



REAL FAST

Highly trained technicians will provide you real-time solutions, whatever the issue, on your first contact. If needed, our team will schedule an onsite visit for the next business day.



HASSLE FREE

'Getting started' and 'how-to' assistance for hardware and software. Easy solutions that are simple to reach - that's how Premium Care delivers you the ideal support experience.



PC HEALTH CHECK

Free annual PC Health Check that allows our experts to spot issues before you do so they can resolve them quickly and help you avoid PC problems.

Accidental Damage Protection - Protection of your PC from the unexpected.

Experience shows that a significant portion of devices may be damaged (and not covered under warranty) in the first three years. Lenovo's Accidental Damage Protection service covers accidents beyond the system warranty such as drops, spills, bumps and even electrical surges. Make sure your new device has maximum protection, avoid unplanned costs and get peace of mind.

Base Warranty - Included with the systems you purchase, default 1- or 3-year coverage window.

Warranty Extensions & Upgrades - Service and protection that's right for your circumstances.

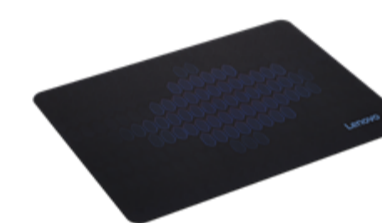
- Pick Up & Return Courier
- Onsite Support
- Technician Installed Customer
- Replaceable Unit Service
- International Warranty Upgrade

Recommended Accessories Mexico



Kensington MicroSaver DS 2.0 Cable Lock from Lenovo

4XE1L68273



Lenovo Cloth Gaming Mouse Pad M

GXH1C97873

>> [View More Accessories](#)

Product Illustration



PERFORMANCE

Display Size
27"

View Area
597.9x336.3 mm

Panel
VA

Backlight
WLED

Aspect Ratio
16:9

Resolution
1920x1080

Pixel Pitch
0.3114x0.3114mm

Dot / Pixel Per Inch
82 dpi

View Angle (H / V)
178° / 178°

Response Time
0.5ms (MPRT) / 1ms (Level 4) / 2ms (Level 3) / 4ms (Level 2) / 6 ms (Level 1)

Color Support
16.7 Million

Refresh Rate
240Hz (Overclock to 280Hz)

Brightness
350 cd/m²

Contrast Ratio
3000:1

Color Gamut
99% sRGB, 90% DCI-P3

Screen Surface Treatment
Anti-glare

Curvature
1500R

Camera
None

Microphone
None

Speakers
3Wx2

Power Consumption (Typical / Maximum)
24W / 47W

Power Adapter
Integrated

Touchscreen
None

Smart System
None

DESIGN

Stand
Tilt, Swivel, Pivot, Height Adjust Stand

Case Color
Raven Black

Side Bezel Width
1.5 mm

Mounting
Supports VESA mount 100mm

ThinkCentre M Series Support
None

Pen
None

Dimensions (WxDxH)^[1]

- Lowest Position | 610.3 x 258.8 x 385.8 mm (24.03 x 10.19 x 15.19 inches)
- Highest Position | 610.3 x 258.8 x 520.8 mm (24.03 x 10.19 x 20.50 inches)
- Head Only | 610.3 x 82.7 x 367.3 mm (24.03 x 3.26 x 14.46 inches)

Packaging Dimensions (WxDxH)
820 x 187 x 500 mm (32.28 x 7.36 x 19.69 inches)

Weight^[2]

- Monitor With Stand | 6.2 kg (13.7 lbs)
- Monitor Head Only | 4.3 kg (9.5 lbs)

Packaging Weight
10.3 kg (22.7 lbs)

CONNECTIVITY

USB Port
None

Video Connector
2x HDMI® 2.1 TMDS, 1x DP 1.4

Network Connectivity
None

SERVICE

Base Warranty
3-year limited warranty

CERTIFICATIONS

Environmental Certification
RoHS, EU Energy Efficiency Level (Level-E)

Ergonomic Certification
Eyesafe® Display 2.0, TÜV Low Blue Light (Hardware solution), TÜV Rheinland® Eye Comfort

Sync Technology
AMD FreeSync™, VESA Adaptive Sync, NVIDIA® G-SYNC® Compatible

Special Features

- HDR10 Compliance
- AMD FreeSync™ AMD FreeSync™ technology only can work with AMD Radeon™ series graphics card.
- VESA Adaptive Sync
- Lenovo® Artery (Lenovo® Accessories and Display Manager) Support
Lenovo® Artery supports Windows® 10 & 11, Mac OS, and Windows® On Arm (functions vary across systems). Lenovo® Accessories and Display Manager is formerly Lenovo® Display Control Center.
- Gaming Console Support
- Natural Low Blue Light

SOFTWARE

Operating System
Support Windows® 10, Windows® 11

ACCESSORIES

- In the Box**
- Monitor with stand
 - 1x DP cable (1.8m)
 - 1x Power cable (1.5m)
 - 4x Screws
 - Warranty booklet

MODEL

Region : LA
EAN / UPC / JAN: 0197529364642 / 197529364642 / None
Announce Date : 2023-07-28

Note:
 [1] The system dimensions may vary depending on configurations.
 [2] The system weight is approximate and based on results in Lenovo lab, which varies depending on the source of component, variance of the distribution of each component, and manufacturing process. It may not be the exact weight for each specific model.

- Please refer to the official [Lenovo store website](#) or contact a local Lenovo sales representative or authorized business partner for current inventory and purchase options.
- Lenovo reserves the right to change specifications without notice.